

1 Lawrence Lodge



1 Lawrence Lodge, Fountain Way, SP2 7FR

A bright and well presented one bedroom, unfurnished retirement apartment exclusively for the over 55's, located in the sought after Lawrence Lodge development.

- Purpose built flat strictly for the over 55s
- Open plan kitchen/living room
- Double bedroom with fitted wardrobes
- Modern shower room
- Communal grounds
- Communal living room and library
- On site residents Bistro
- Compulsory service charge of £250 per month
- Community heating scheme.
- EPC Rating Band B

£950 PCM





About The Property

A bright and well presented one bedroom, unfurnished retirement apartment for the over 55's, located in the sought after Lawrence Lodge development.

Accommodation comprises:

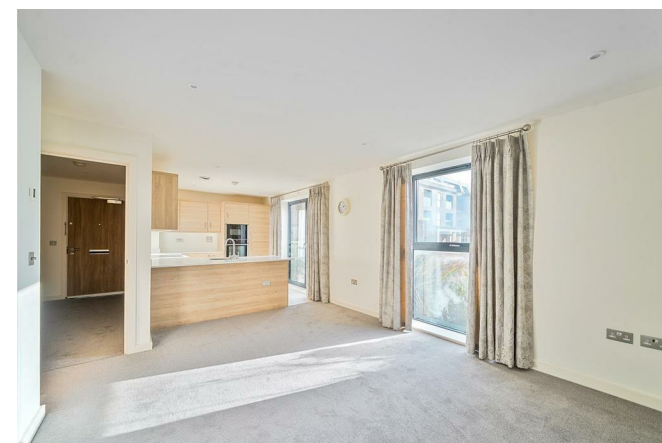
Entrance hall. Open plan kitchen/living room with ceramic hob, electric oven and integrated fridge/freezer and washing machine. Double bedroom with fitted wardrobe. Shower room with large walk in shower.

Communal grounds and communal lounge area, library and bistro for residents.

The heating is on a community heating scheme with programmers within the apartment.

Compulsory £250 per month service charge.

Allocated parking upon request for an extra charge of approximately £500 per year.



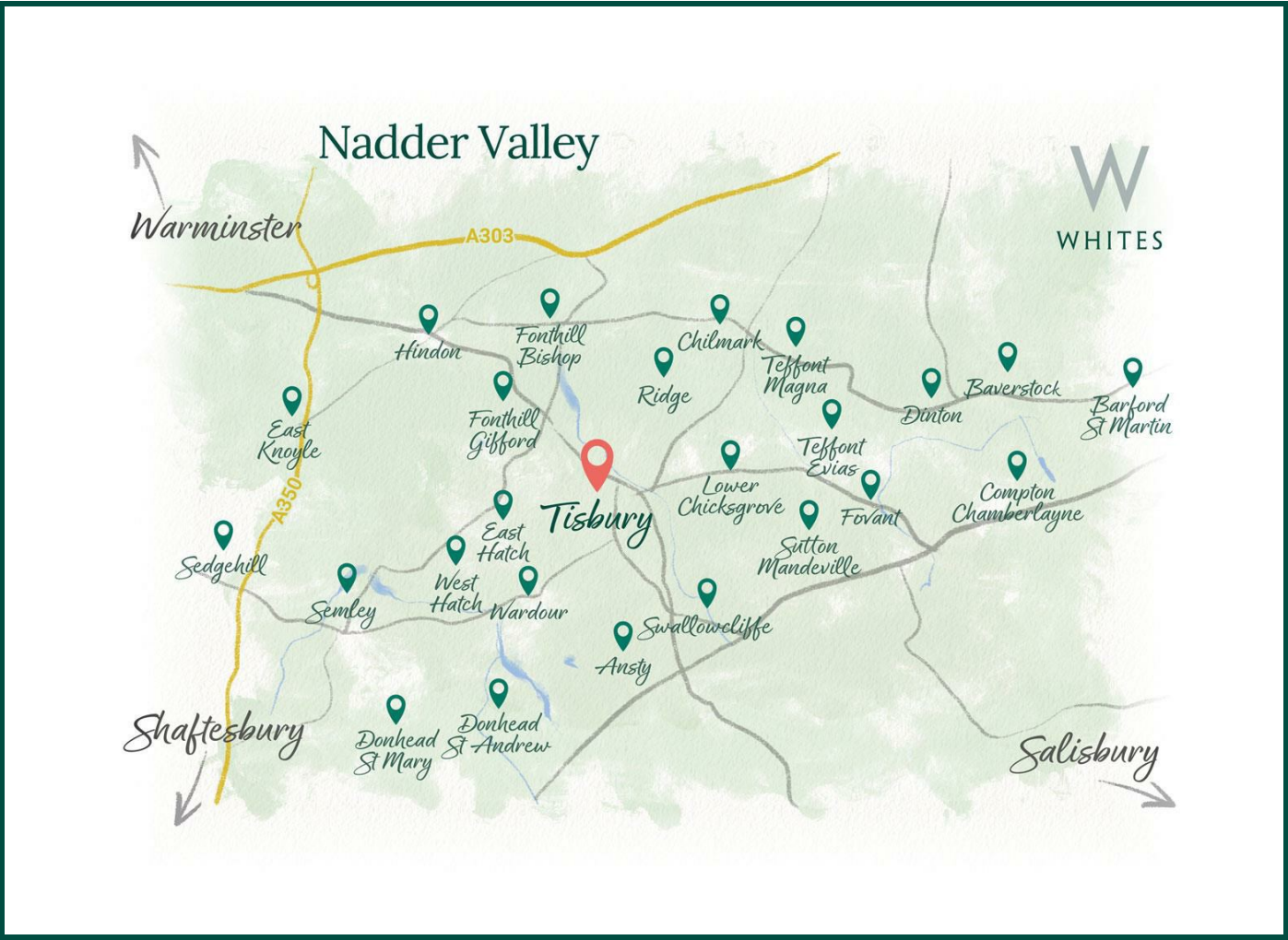


Location

To delete all this text quicky - open the text box, then hold CRT and A - this will highlight all text in the box. Then you can press delete.

[Copy village description Mimi has given you into here (from the word document)].
For more info on the villages / to help with the timings below, you can also look at the villages on our website - they give you lots of useful information like pub names, shops, etc.
You can find them by searching the village name on our website's serach bar, and clicking on the village page.

---> for the box to the right - that should contain the hand drawn map of the area. You can add this by clicking 'New Selection' -> Library Image -> 'Handdrawn Area Map - XXX area'.
Once you have added the map to the brochure, hold down the Shift Key to resize it (this means it will resize proportionally, so will be much easier for you to fit in the box!). Once you have dragged the map to the correct size, take your finger off



Southampton Central: 30 mins
Bath Spa: 1 hr
London Waterloo: 1 hr 28 mins



Salisbury: X mins
Bath: X hr X mins
London: X hr X mins



Local school: X mins
Local public house: X mins
Local amenities: X mins

Key Information

Local Authority:

Wiltshire Council

Council Tax:

Band: C - £XXXX (2025/2026)

Property Type:

Apartment - Retirement

Floor Area:

 570.00 sq ft

Let Available Date:

1st February 2026 NB: This date is provisional and will only be confirmed once referencing has been successfully completed.

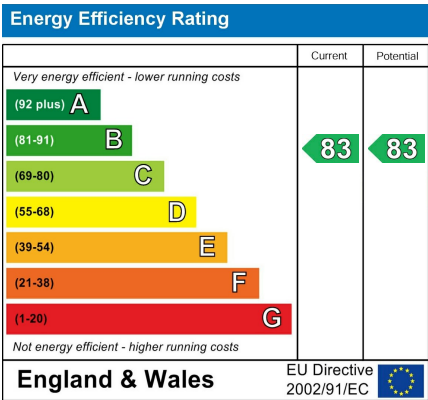
Furnish Type:

Unfurnished

Deposit:

£1,095

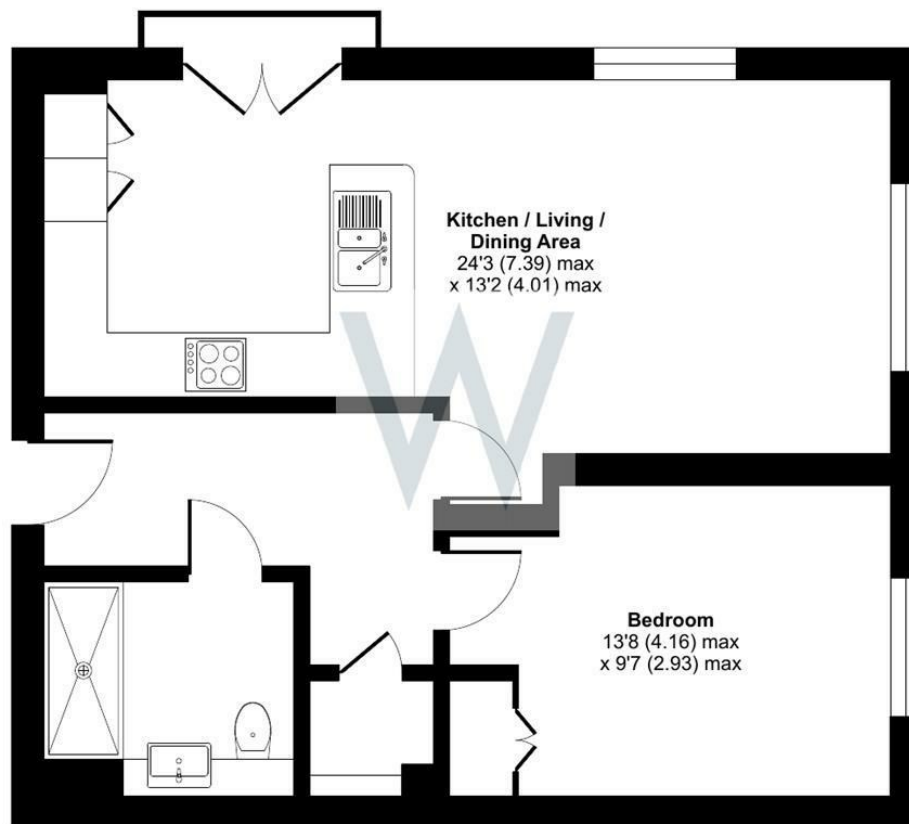
EPC:



Lawrence Lodge, Fountain Way, Salisbury, SP2

Approximate Area = 581 sq ft / 53.9 sq m

For identification only - Not to scale



FIRST FLOOR



Floor plan produced in accordance with RICS Property Measurement Standards incorporating International Property Measurement Standards (IPMS2 Residential). © nichecom 2026.
Produced for H W White Ltd. REF: 1405149

